

The logo for njietta features the letters 'nj' in a blue gradient font on the left, and 'ietta' in a bold black font on the right. The 'nj' is set against a light blue circular background, and the 'ietta' is set against a yellow circular background. Below the letters, there are two rows of stylized human figures: the first row has four figures (two male, two female) and the second row has 14 figures (seven male, seven female).

njietta


***New Jersey Inclusion Education Technical
Assistance Program***

Something to consider...


“The belief that all children, regardless of their differences, are smart, competent learners leads to a different approach to inclusion for students with disabilities. Instead of focusing on low-level skills and students’ deficits, a social constructivist stance seeks to challenge all students with the sort of rich, engaging {teaching} common in classrooms serving the most academically successful students.”

-Dudley-Marling & Burns


What is NJIETA?



A collaborative effort between the New Jersey Department of Education Office of Special Education (OSE), the Montclair State University Center for Autism and Early Childhood Mental Health (CAECMH), and the New Jersey Coalition for Inclusive Education (NJCIE).



The design is for collaborators to partner with public, charter, and vocational schools to provide Technical Assistance and Systemic Change Facilitation to develop more inclusive educational opportunities.



NJIETA will also work to develop a statewide vision for more inclusive schools through the Inclusion Leadership Development Group (ILDG).



MONTCLAIR STATE

UNIVERSITY



njieta

The logo for NJIETA, featuring the word "njieta" in a lowercase, sans-serif font. The letters "n", "j", and "i" are blue, while "e", "t", and "a" are black. Below the text is a row of stylized human figures in various colors.

How was our district chosen?

- **NJIETA chose 15 preschool sites within the state to provide professional development (technical assistance). An application was submitted in Spring 2020.**
- **NJIETA decided to focus on the preschool programs in Roosevelt and Grover Cleveland Schools.**

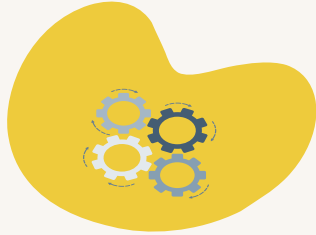
Program Specifics for Spring 2021

- **5 week Program will run in the spring, beginning the week of April 19 through May 17.**
- **Expected attendees include general and special education teachers; related service providers and support staff; and administrators.**

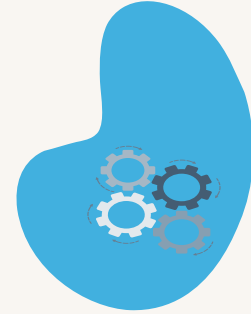
Program Specifics for Spring 2021 continued...

- This year's focus will be on integrating related services into the preschool classrooms.**
- Each attendee will be asked to individually view an asynchronous module prior to attending a weekly virtual PLC on the mentioned dates.**
- A pre-survey was completed by participants to guide the facilitators in the development of their presentations and to lead their discussions.**

Occurring now...Communities of Practice (CoP)



**Occurring monthly:
1 hour sessions**



**Three cohorts: teachers,
related service providers,
administrators**

Goals for the CoP include

1. **Supporting early childhood professionals working with NJIETA during the Covid 19 Pandemic**
2. **Sharing information, experiences, tools, and resources**
3. **Building the capacity of early childhood professionals to support one another, families, and students**

Our Goals



To shift mindsets...



Encourage and enhance preschool inclusion best practices throughout all sites within the district.



Apply for additional support for the 21-22 school year in the form of Systemic Change Facilitation by the NJIETA.

Thanks!

Do you have any questions?

tkopec@rahway.net
732 827 7202



This presentation template was created by Slidesgo, including icons by Flaticon, and infographics & images by Freepik

Please keep this slide for attribution