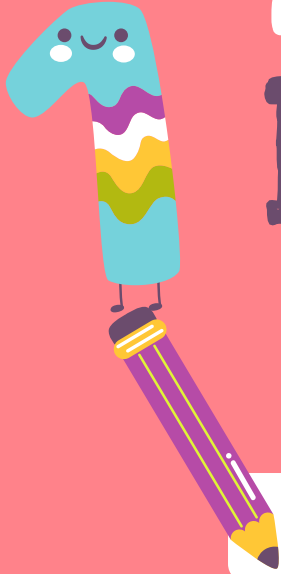


2021-2022 Preschool Plan

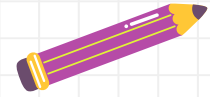


Review of DOE Approval

Jennifer Alphonse, Program Supervisor of Early
Childhood Education



Enrollment



365 preschoolers

Rahway will provide preschool services to 337 general education students and 28 children with IEP's in a general education setting



Classrooms



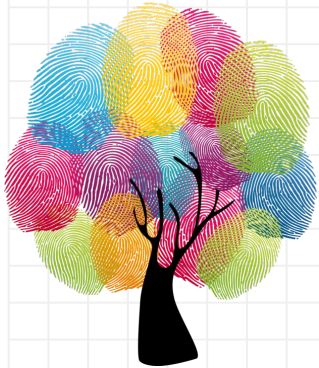
In the 2021-2022 school year the preschool program enrollment will include:

1. 1 additional classroom at Rahway Day Care Center
2. A new partnership with the Gateway Family YMCA to provide preschool services to 30 children (2 classrooms)

Total Dollars Awarded

—.

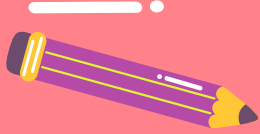
\$4.9 Million Dollars



Goals

The below goals will be achieved in the 2021-2022 school year. All goals align with NJ Department of Education guidelines and recommendations:

- Addition of 1 Social Worker/Community Program Involvement Specialist
- Service more of the Rahway preschool “Universe” (72%)
- Refine our Preschool Intervention and Referral Team
- Develop a more inclusive preschool classroom environment that will include more children with IEP’s in all classrooms
- Prepare for our first NJ Department of Education review using the Self-Assessment Validation System (SAVS)



We've only
just
begun!



Many THANKS!

Do you have any questions?
Jennifer Alphonse,
Program Supervisor of Early Childhood
Education
Jalphonse@rahway.net

CREDITS: This presentation template was created
by [Slidesgo](#), including icons by [Flaticon](#), and
infographics & images by [Freepik](#)

Please keep this slide as attribution

